



1124	POLES, HARDWARE, AND FRAMING 3PH SELF-SUPPORTING FRAMING	
Sheet 1 of 1		
Rev: 05/18/22		

# 1124

## 3 PHASE SELF-SUPPORTING FRAMING

### CONTAINS

- 1124-00 WIRE TENSION TABLE & NOTES**
- 1124-01 795 CONSTRUCTION OVERLOAD**
- 1124-02 4/0 CONSTRUCTION OVERLOAD**
- 1124-03 1/0 CONSTRUCTION OVERLOAD**
- 1124-04A 3PH DE SELF-SUPPORTING POLES**
- 1124-04B 1PH DE SELF-SUPPORTING POLES**
- 1124-05 3PH - SS SGL & DBL PIN**
- 1124-22 3PH - SS SGL DE FLAT**
- 1124-30 3PH - SS DBL DE FLAT**
- 1124-32 3PH - SS SGL DE JUNCTION FLAT**
- 1124-42 3PH - SS SGL DE FLAT CORNER**

<b>1124-00</b>	<b>POLES, HARDWARE, AND FRAMING 3PH SELF-SUPPORTING FRAMING</b>	
Sheet 1 of 1		
Rev: 08/01/20		

**1124-00 WIRE TENSION TABLE & NOTES**

**Notes:**

These charts and models refer to Steel Poles.

If there is a difference in elevation between poles that are greater than 5' with greater than 200 ft span, it must be modeled by an engineer.

If there is a junction pole or pole with multiple circuits, it must be modeled by an engineer.

All calculations based on NESC medium loading area.

NESC Grade C construction areas include all electrical distribution lines except for highways and railroad crossings.

NESC Grade B construction areas include only highways and railroad crossings.

Consult with design lead to determine if 1/0 or 4/0 lines would be candidate for upgrade in the short-to-mid-term future.

Pole calculations done with consideration of two tangent medium to heavy communications.

Dead-end pole calculations done with consideration of dead-end medium sized communications. Any more than 2 will require to be modeled by an engineer.

Angle-pole and Dead-end pole calculations were performed with static full tension values in below table. Unless calculation states that it is "reduced tension" (50%) or slack (15%) of full tension values.

The pole analysis calculations are done to a maximum pole capacity utilization of 80%.

Dead-end poles shall have a full tension max span of 300 ft, spans greater than this will need to be modeled by an engineer.

Dead-end poles that have a "reduced" span of greater than 150 ft or "slack" span greater than 75 ft will need to be an engineer.

The longest span shall be modeled with the angle presented on the design.

Static Full Tension Table (lbs)		
AAC 795 KCM	<i>Arbutus</i>	4750
ACSR 336 KCM	<i>26/7 Linnet</i>	4230
AAC 4/0	<i>Oxlip</i>	1500
ACSR 1/0	<i>Raven</i>	1500



**1124-01 795 CONSTRUCTION OVERLOAD**

These charts and models refer to Steel Poles.

795 KCMIL AAC Arbutus Primary with 4/0 AAC Oxlip Neutral						
Ruling Span	<100 Feet		100-200 Feet		200-300 Feet	
Pole Length (ft.)	Grade C Limit (line angle degrees)	Grade B Limit (line angle degrees)	Grade C Limit (line angle degrees)	Grade B Limit (line angle degrees)	Grade C Limit (line angle degrees)	Grade B Limit (line angle degrees)
<i>(LD-2 Series)</i>						
45	0°-7°	0°-4°	0°-6°	0°-4°	0°-5°	0°-3°
50	0°-7°	0°-4°	0°-6°	0°-4°	0°-5°	0°-3°
55	0°-7°	0°-4°	0°-6°	0°-4°	0°-5°	0°-3°
60	0°-7°	0°-4°	0°-6°	0°-4°	0°-5°	0°-3°
65	0°-6°	0°-4°	0°-5°	0°-4°	0°-4°	0°-3°
<i>(LD-4 Series)</i>						
45	8°-10°	5°-6°	7°-9°	5°	6°-8°	4°
50	8°-10°	5°-6°	7°-9°	5°	6°-8°	4°
55	8°-10°	5°-6°	7°-9°	5°	6°-8°	4°
60	8°-10°	5°-6°	7°-9°	5°	6°-8°	4°
65	7°-9°	5°-6°	6°-8°	5°	5°-7°	4°
<i>(LD-6 Series)</i>						
45	11°-14°	7°-9°	10°-13°	6°-8°	9°-12°	5°-7°
50	11°-14°	7°-9°	10°-13°	6°-8°	9°-12°	5°-7°
55	11°-14°	7°-9°	10°-13°	6°-8°	9°-12°	5°-7°
60	11°-13°	7°-8°	10°-12°	6°-7°	9°-11°	5°-6°
65	10°-13°	7°-8°	9°-12°	6°-7°	8°-11°	5°-6°
<i>(LD-8 Series)</i>						
45	15°-20°	10°-13°	14°-19°	9°-12°	13°-18°	8°-11°
50	15°-19°	10°-12°	14°-18°	9°-11°	13°-17°	8°-10°
55	15°-18°	10°-12°	14°-17°	9°-11°	13°-16°	8°-10°
60	14°-17°	9°-11°	13°-16°	8°-10°	12°-15°	7°-9°
65	14°-17°	9°-11°	13°-16°	8°-10°	12°-15°	7°-9°
<i>(LD-10 Series)</i>						
45	21°-25°	14°-16°	20°-24°	13°-15°	19°-23°	12°-14°
50	20°-24°	13-16°	19°-23°	12°-15°	18°-22°	11°-14°
55	19°-23°	13°-15°	18°-22°	12°-14°	17°-21°	11°-13°
60	18°-22°	12°-14°	17°-21°	11°-13°	16°-20°	10°-12°
65	18°-21°	12°-14°	17°-20°	11°-13°	16°-19°	10°-12°

POLES, HARDWARE, AND FRAMING  
 3PH SELF-SUPPORTING FRAMING  
 795 CONSTRUCTION OVERLOAD



These charts and models refer to Steel Poles.

795 KCMIL AAC Arbutus Primary with 1/0 ACSR Raven Neutral						
Ruling Span	<100 Feet		100-200 Feet		200-300 Feet	
Pole Length (ft.)	Grade C Limit (line angle degrees)	Grade B Limit (line angle degrees)	Grade C Limit (line angle degrees)	Grade B Limit (line angle degrees)	Grade C Limit (line angle degrees)	Grade B Limit (line angle degrees)
<i>(LD-2 Series)</i>						
45	0°-7°	0°-5°	0°-6°	0°-5°	0°-6°	0°-4°
50	0°-7°	0°-5°	0°-6°	0°-5°	0°-6°	0°-4°
55	0°-7°	0°-5°	0°-6°	0°-5°	0°-6°	0°-4°
60	0°-6°	0°-5°	0°-6°	0°-5°	0°-5°	0°-4°
65	0°-6°	0°-5°	0°-6°	0°-5°	0°-5°	0°-4°
<i>(LD-4 Series)</i>						
45	8°-10°	6°	7°-10°	6°	7°-9°	5°
50	8°-10°	6°	7°-10°	6°	7°-9°	5°
55	8°-10°	6°	7°-10°	5°	7°-9°	5°
60	7°-10°	6°	7°-9°	5°	6°-9°	5°
65	7°-9°	6°	7°-9°	5°	6°-8°	5°
<i>(LD-6 Series)</i>						
45	11°-15°	7°-9°	11°-14°	7°-9°	10°-14°	6°-8°
50	11°-14°	7°-9°	11°-14°	7°-8°	10°-13°	6°-8°
55	11°-14°	7°-9°	11°-14°	6°-8°	9°-13°	6°-8°
60	11°-13°	7°-8°	10°-13°	6°-8°	10°-12°	6°-7°
65	10°-13°	7°-8°	10°-12°	6°-7°	9°-12°	6°-7°
<i>(LD-8 Series)</i>						
45	16°-21°	10°-13°	15°-20°	10°-13°	15°-20°	9°-12°
50	15°-20°	10°-12°	15°-19°	9°-12°	14°-19°	9°-12°
55	15°-19°	10°-12°	15°-19°	9°-11°	14°-18°	9°-11°
60	14°-18°	9°-11°	14°-17°	9°-11°	13°-17°	8°-10°
65	14°-17°	9°-11°	13°-17°	8°-10°	13°-16°	8°-10°
<i>(LD-10 Series)</i>						
45	22°-27°	14°-17°	21°-26°	14°-16°	21°-26°	13°-16°
50	21°-25°	13°-16°	20°-25°	13°-16°	20°-24°	13°-15°
55	20°-24°	13°-15°	20°-24°	12°-15°	19°-23°	12°-14°
60	19°-23°	12°-15°	18°-23°	12°-14°	18°-22°	11°-14°
65	18°-21°	12°-14°	18°-22°	11°-13°	17°-21°	11°-13°

POLES, HARDWARE, AND FRAMING  
 3PH SELF-SUPPORTING FRAMING  
 4/0 CONSTRUCTION OVERLOAD



These charts and models refer to Steel Poles.


4/0 AAC Oxlip Primary with 4/0 AAC Oxlip Neutral						
Ruling Span	<100 Feet		100-200 Feet		200-300 Feet	
Pole Length (ft.)	Grade C Limit (line angle degrees)	Grade B Limit (line angle degrees)	Grade C Limit (line angle degrees)	Grade B Limit (line angle degrees)	Grade C Limit (line angle degrees)	Grade B Limit (line angle degrees)
<i>(LD-2 Series)</i>						
45	0°-20°	0°-12°	0°-18°	0°-10°	0°-16°	0°-8°
50	0°-20°	0°-12°	0°-18°	0°-10°	0°-16°	0°-8°
55	0°-20°	0°-12°	0°-18°	0°-10°	0°-15°	0°-8°
<i>(LD-4 Series)</i>						
45	21°-30°	13°-18°	19°-27°	11°-16°	17°-25°	9°-14°
50	21°-29°	13°-18°	19°-27°	11°-16°	17°-25°	9°-14°
55	21°-29°	13°-18°	19°-27°	11°-16°	16°-25°	9°-14°
<i>(LD-6 Series)</i>						
45	31°-41°	19°-26°	28°-39°	17°-24°	26°-37°	15°-22°
50	30°-40°	19°-25°	28°-38°	17°-23°	26°-36°	15°-21°
55	30°-39°	19°-25°	28°-37°	17°-23°	26°-35°	15°-21°
<i>(LD-8 Series)</i>						
45	42°-58°	27°-37°	40°-56°	25°-35°	38°-54°	23°-33°
50	41°-56°	26°-35°	39°-54°	24°-33°	37°-52°	22°-31°
55	40°-53°	26°-33°	38°-51°	24°-31°	36°-49°	22°-29°
<i>(LD-10 Series)</i>						
45	59°-76°	38°-47°	57°-74°	36°-45°	55°-72°	34°-43°
50	57°-72°	36°-45°	55°-70°	34°-43°	53°-68°	32°-41°
55	54°-69°	34°-43°	52°-67°	32°-41°	50°-65°	30°-39°

POLES, HARDWARE, AND FRAMING  
 3PH SELF-SUPPORTING FRAMING  
 1/0 CONSTRUCTION OVERLOAD



These charts and models refer to Steel Poles.

1/0 ACSR Raven Primary with 1/0 ACSR Raven Neutral						
Ruling Span	<100 Feet		100-200 Feet		200-300 Feet	
Pole Length (ft.)	Grade C Limit (line angle degrees)	Grade B Limit (line angle degrees)	Grade C Limit (line angle degrees)	Grade B Limit (line angle degrees)	Grade C Limit (line angle degrees)	Grade B Limit (line angle degrees)
<i>(LD-2 Series)</i>						
45	0°-20°	0°-12°	0°-18°	0°-11°	0°-16°	0°-9°
50	0°-20°	0°-12°	0°-18°	0°-10°	0°-16°	0°-9°
55	0°-20°	0°-12°	0°-18°	0°-10°	0°-16°	0°-8°
<i>(LD-4 Series)</i>						
45	21°-30°	13°-19°	19°-28°	12°-17°	17°-26°	10°-15°
50	21°-29°	13°-18°	19°-28°	11°-17°	17°-26°	10°-15°
55	21°-29°	13°-18°	19°-27°	11°-16°	17°-25°	9°-15°
<i>(LD-6 Series)</i>						
45	31°-41°	20°-26°	29°-40°	18°-25°	27°-38°	16°-23°
50	30°-41°	19°-26°	29°-39°	18°-24°	27°-37°	16°-22°
55	30°-40°	19°-25°	28°-38°	17°-23°	26°-36°	16°-22°
<i>(LD-8 Series)</i>						
45	42°-58°	27°-37°	41°-57°	26°-35°	39°-55°	24°-34°
50	42°-56°	27°-35°	40°-54°	25°-34°	38°-52°	23°-32°
55	41°-53°	26°-34°	39°-52°	24°-32°	37°-50°	23°-29°
<i>(LD-10 Series)</i>						
45	59°-76°	38°-47°	58°-75°	36°-46°	56°-73°	35°-47°
50	57°-72°	36°-45°	55°-71°	35°-44°	53°-69°	33°-42°
55	54°-69°	35°-43°	53°-67°	33°-42°	51°-66°	30°-40°

<b>1124-04</b>	<b>POLES, HARDWARE, AND FRAMING</b> <b>3PH SELF-SUPPORTING FRAMING</b> <b>3PH DE SELF-SUPPORTING POLES</b>	
Sheet 1 of 1		
Rev: 08/01/20		


These charts and models refer to Steel Poles.

<i>Conductor &amp; Neutral</i>	3PH 795 KCMIL AAC Arbutus Primary with 4/0 AAC Oxlip Neutral		3PH 795 KCMIL AAC Arbutus Primary with 1/0 Raven Neutral	
<b>NESC Grade Scenario</b>	<b>Grade C Limit - Max Dist</b>	<b>Grade B Limit - Max Dist</b>	<b>Grade C Limit - Max Dist</b>	<b>Grade B Limit - Max Dist</b>
Full Tension (100%)	LD-MOD	LD-MOD	LD-MOD	LD-MOD
Reduced Tension (50%)	LD-MOD	LD-MOD	LD-10	LD-MOD
Slack (15%)	LD-6	LD-8	LD-6	LD-8

<i>Conductor &amp; Neutral</i>	3PH 336 ACSR Linnet Primary with 4/0 AAC Oxlip Neutral		3PH 336 ACSR Linnet Primary with 1/0 Raven Neutral	
<b>NESC Grade Scenario</b>	<b>Grade C Limit - Max Dist</b>	<b>Grade B Limit - Max Dist</b>	<b>Grade C Limit - Max Dist</b>	<b>Grade B Limit - Max Dist</b>
Full Tension (100%)	LD-MOD	LD-MOD	LD-MOD	LD-MOD
Reduced Tension (50%)	LD-10	LD-MOD	LD-10	LD-MOD
Slack (15%)	LD-6	LD-8	LD-6	LD-6

<i>Conductor &amp; Neutral</i>	3PH 4/0 AAC Oxlip Primary with 4/0 AAC Oxlip Neutral		3PH 4/0 AAC Primary with 1/0 Raven Neutral	
<b>NESC Grade Scenario</b>	<b>Grade C Limit - Max Dist</b>	<b>Grade B Limit - Max Dist</b>	<b>Grade C Limit - Max Dist</b>	<b>Grade B Limit - Max Dist</b>
Full Tension (100%)	LD-MOD	LD-MOD	LD-MOD	LD-MOD
Reduced Tension (50%)	LD-10	LD-10	LD-10	LD-10
Slack (15%)	LD-6	LD-6	LD-4	LD-4

<i>Conductor &amp; Neutral</i>	3PH 1/0 Raven Primary with 1/0 Raven Neutral	
<b>NESC Grade Scenario</b>	<b>Grade C Limit - Max Dist</b>	<b>Grade B Limit - Max Dist</b>
Full Tension (100%)	LD-MOD	LD-MOD
Reduced Tension (50%)	LD-10	LD-10
Slack (15%)	LD-6	LD-6

<b>1124-04B</b>	<b>POLES, HARDWARE, AND FRAMING</b> <b>3PH SELF-SUPPORTING FRAMING</b> <b>1PH DE SELF-SUPPORTING POLES</b>	
Sheet 1 of 1		
Rev: 08/01/20		

These charts and models refer to Steel Poles.

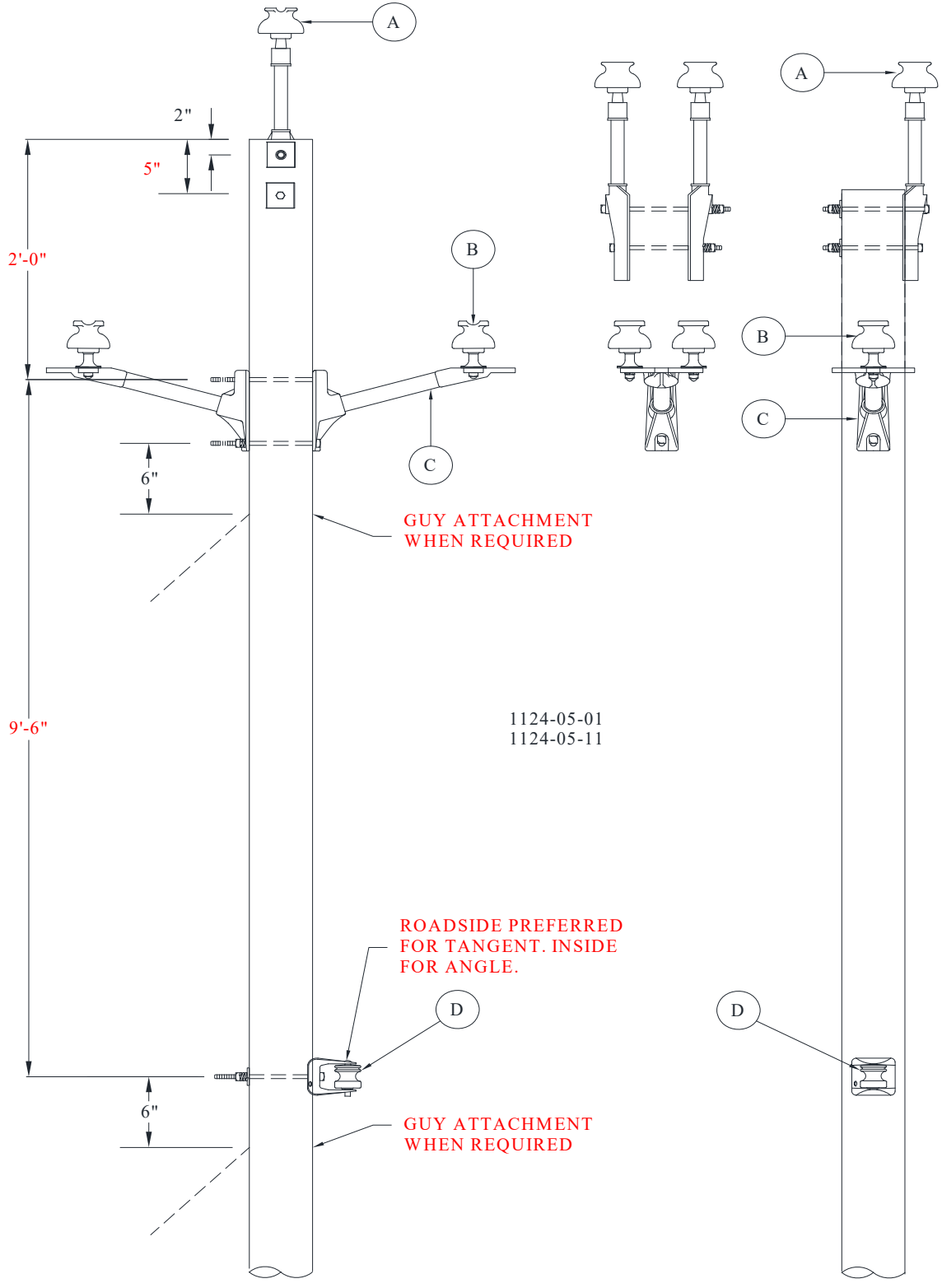
<i>Conductor &amp; Neutral</i>	1PH 4/0 AAC Oxlip Primary with 4/0 AAC Oxlip Neutral		1PH 4/0 AAC Primary with 1/0 Raven Neutral	
<b>NESC Grade Scenario</b>	<b>Grade C Limit - Max Dist</b>	<b>Grade B Limit - Max Dist</b>	<b>Grade C Limit - Max Dist</b>	<b>Grade B Limit - Max Dist</b>
Full Tension (100%)	LD-6	LD-8	LD-4	LD-8
Reduced Tension (50%)	LD-2	LD-6	LD-2	LD-4

<i>Conductor &amp; Neutral</i>	1PH 1/0 Raven Primary with 1/0 Raven Neutral	
<b>NESC Grade Scenario</b>	<b>Grade C Limit - Max Dist</b>	<b>Grade B Limit - Max Dist</b>
Full Tension (100%)	LD-4	LD-6
Reduced Tension (50%)	LD-2	LD-4




<b>1124-05</b>
Sheet 1 of 4
Rev: 08/01/20

**POLES, HARDWARE, AND FRAMING**  
**3PH SELF-SUPPORTING FRAMING**  
**3PH SELF SUPPORTING SGL AND DBL PIN**



1124-05-01  
1124-05-11

<b>1124-05</b>	<b>POLES, HARDWARE, AND FRAMING 3PH SELF-SUPPORTING FRAMING 3PH SELF SUPPORTING SGL AND DBL PIN</b>	
Sheet 2 of 4		
Rev: 08/01/20		

**MU**

**REFERENCE FOR SPAN LENGTH/ANGLE PARAMETERS**

MU-REF	WIRE	PARAMETERS
1124-05-01	1/0	SPAN LENGTH < 300 FT
	4/0	SPAN LENGTH < 250 FT
	795	SPAN LENGTH < 250 FT
1124-05-11	1/0	SPAN LENGTH > 300 FT
	4/0	SPAN LENGTH > 250 FT
	795	SPAN LENGTH > 250 FT
1124-05-01	1/0	ANGLE POLE < 30 DEGREES WITH SPAN LENGTH < 300 FT.
	4/0	ANGLE POLE < 09 DEGREES WITH SPAN LENGTH < 250 FT.
	795	ANGLE POLE < 09 DEGREES WITH SPAN LENGTH < 250 FT.
1124-05-11	1/0	ANGLE POLE < 30 DEGREES WITH SPAN LENGTH > 300 FT.
	4/0	ANGLE POLE > 09 AND < 18 DEGREES WITH SPAN LENGTH < 250 FT.
	795	ANGLE POLE > 09 AND < 18 DEGREES WITH SPAN LENGTH < 250 FT.

**MU-ID**

**MU-REF**

**MU-DESCRIPTION**

3PHSSSGLPNSGLNU

11240501

3PH SS WITH SGL PIN SGL NEUT

ID	CU-REF	CU-DESC	QTY	MU-REF
A	11200701	INSULATOR W/ FIBERGLASS POLE TOP PIN-SGL	1	11240501
B	11200801	INSULATOR W/SHORT SHANK PIN	2	11240501
C	11201102	BRKT 3 EAR FG 18 IN-DBL	1	11240501
D	11201003	BRKT RACK 1 POINT 14 IN-SGL	1	11240501

3PHSSDBLPNSGLNU

11240511

3PH SS WITH DBL PIN SGL NEUT

ID	CU-REF	CU-DESC	QTY	MU-REF
A	11200702	INSULATOR W/ FIBERGLASS POLE TOP PIN-DBL	1	11240511
B	11200801	INSULATOR W/SHORT SHANK PIN	4	11240511
C	11201102	BRKT 3 EAR FG 18 IN-DBL	1	11240511
D	11201003	BRKT RACK 1 POINT 14 IN-SGL	1	11240511

**NOTE ADD MODULE 11201003 WHEN SECOND BRACKET IS REQUIRED FOR SECONDARY SERVICE**

**ASSOCIATED MODULES**

	CU-REF	CU-DESCRIPTION	QTY	MU-REF
1/0-1/0 TAN	1240-04-03	TIES PREFM SGL 1/0	3	1124-05-01
	1240-05-40	TIES PREFM SIDE 1/0 NEUTRAL	1	1124-05-01
	1240-04-23	TIES PREFM DBL 1/0	3	1124-05-11
	1240-05-40	TIES PREFM SIDE 1/0 NEUTRAL	1	1124-05-11

<b>1124-05</b>
Sheet 3 of 4
Rev: 08/01/20

**POLES, HARDWARE, AND FRAMING  
3PH SELF-SUPPORTING FRAMING  
3PH SELF SUPPORTING SGL AND DBL PIN**



	CU-REF	CU-DESCRIPTION	QTY	MU-REF
1/0-1/0 ANG	1240-05-03	TIES PREFM SIDE SGL 1/0	3	1124-05-01
	1240-05-40	TIES PREFM SIDE 1/0 NEUTRAL	1	1124-05-01
	1240-05-23	TIES PREFM SIDE DBL 1/0	3	1124-05-11
	1240-05-40	TIES PREFM SIDE 1/0 NEUTRAL	1	1124-05-11

	CU-REF	CU-DESCRIPTION	QTY	MU-REF
4/0-4/0 TAN	1240-04-06	TIES PREFM SINGL 4/0	3	1124-05-01
	1240-05-50	TIES PREFM SGL 4/0 AAC/ACSR NEUTRAL	1	1124-05-01
	1240-04-26	TIES PREFM DBL 4/0	3	1124-05-11
	1240-05-50	TIES PREFM SIDE 4/0 NEUTRAL	1	1124-05-11

	CU-REF	CU-DESCRIPTION	QTY	MU-REF
4/0-4/0 ANG	1240-05-06	TIES PREFM SIDE SGL 4/0	3	1124-05-01
	1240-05-50	TIES PREFM SIDE 4/0 NEUTRAL	1	1124-05-01
	1240-05-26	TIES PREFM SIDE DBL 4/0	3	1124-05-11
	1240-05-50	TIES PREFM SIDE 4/0 NEUTRAL	1	1124-05-11


	CU-REF	CU-DESCRIPTION	QTY	MU-REF
795-4/0 TAN	1240-04-10	TIES PREFM SGL 795	3	1124-05-01
	1240-05-50	TIES PREFM SIDE 4/0 NEUTRAL	1	1124-05-01
	1240-04-30	TIES PREFM DBL 795	3	1124-05-11
	1240-05-50	TIES PREFM SIDE 4/0 NEUTRAL	1	1124-05-11

	CU-REF	CU-DESCRIPTION	QTY	MU-REF
795-4/0 ANG	1240-05-10	TIES PREFM SIDE SGL 795	3	1124-05-01
	1240-05-50	TIES PREFM SIDE 4/0 NEUTRAL	1	1124-05-01
	1240-05-30	TIES PREFM SIDE DBL 795	3	1124-05-11
	1240-05-50	TIES PREFM SIDE 4/0 NEUTRAL	1	1124-05-11

**ASSOCIATED MODULES-GROUNDING- FULL MASTIC-ROCKY SOIL**

	CU-REF	CU-DESCRIPTION	QTY	MU-REF
1/0 N	1119-25-02	GRD STL POLE RS FULL MASTIC 1/0N	1	ALL GROUPS

	CU-REF	CU-DESCRIPTION	QTY	MU-REF
4/0 N	1119-25-07	GRD STL POLE RS FULL MASTIC 4/0N	1	ALL GROUPS

<b>1124-05</b>	<b>POLES, HARDWARE, AND FRAMING 3PH SELF-SUPPORTING FRAMING 3PH SELF SUPPORTING SGL AND DBL PIN</b>	
Sheet 4 of 4		
Rev: 08/01/20		

**ASSOCIATED MODULES-GROUNDING- FULL MASTIC-SOFT SOIL**

CU-REF	CU-DESCRIPTION	QTY	MU-REF
1/0 N	1119-25-01 GRD STL POLE SS FULL MASTIC 1/0N	1	ALL GROUPS

CU-REF	CU-DESCRIPTION	QTY	MU-REF
4/0 N	1119-25-06 GRD STL POLE SS FULL MASTIC 4/0N	1	ALL GROUPS

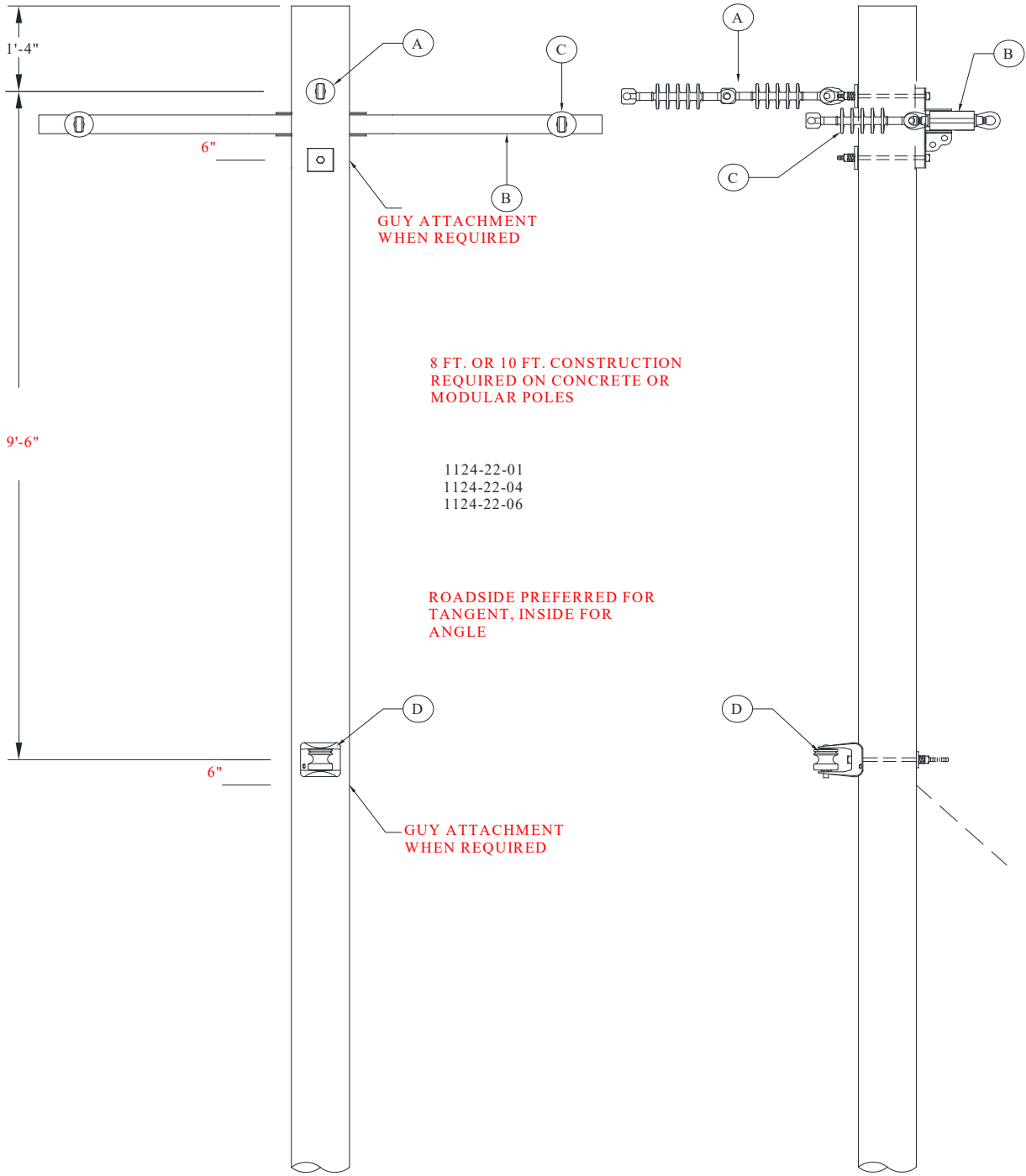
**ASSOCIATED MODULES-GROUNDING- PARTIAL MASTIC**

CU-REF	CU-DESCRIPTION	QTY	MU-REF
1/0 N	1119-26-02 GRD STL POLE W/PARTIAL MASTIC 1/0N	1	ALL GROUPS


CU-REF	CU-DESCRIPTION	QTY	MU-REF
4/0 N	1119-26-05 GRD STL POLE W/PARTIAL MASTIC 4/0N	1	ALL GROUPS

<b>1124-22</b>
Sheet 1 of 3
Rev: 08/01/20

**POLES, HARDWARE, AND FRAMING**  
**3PH SELF-SUPPORTING FRAMING**  
**3PH SELF SUPPORTING SGL DE FLAT**





<b>1124-22</b>	<b>POLES, HARDWARE, AND FRAMING</b> <b>3PH SELF-SUPPORTING FRAMING</b> <b>3PH SELF SUPPORTING SGL DE FLAT</b>	
Sheet 3 of 3		
Rev: 08/01/20		

CU-REF	CU-DESCRIPTION	QTY	MU-REF
4/0 N	1119-25-07 GRD STL POLE RS FULL MASTIC 4/0N	1	ALL GROUPS

**ASSOCIATED MODULES-GROUNDING- FULL MASTIC-SOFT SOIL**

CU-REF	CU-DESCRIPTION	QTY	MU-REF
1/0 N	1119-25-01 GRD STL POLE SS FULL MASTIC 1/0N	1	ALL GROUPS

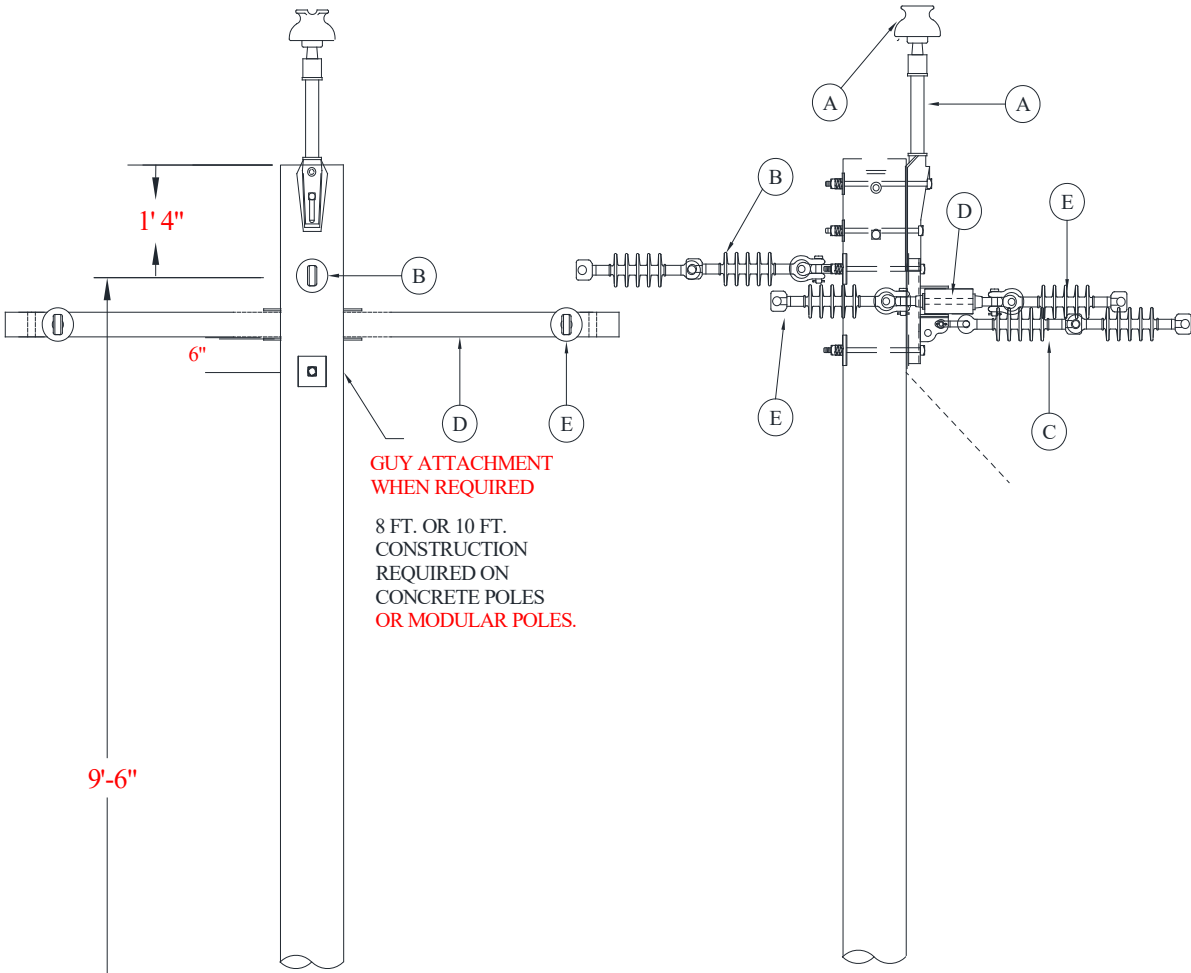
CU-REF	CU-DESCRIPTION	QTY	MU-REF
4/0 N	1119-25-06 GRD STL POLE SS FULL MASTIC 4/0N	1	ALL GROUPS

**ASSOCIATED MODULES-GROUNDING- PARTIAL MASTIC**

CU-REF	CU-DESCRIPTION	QTY	MU-REF
1/0 N	1119-26-02 GRD STL POLE W/PARTIAL MASTIC 1/0N	1	ALL GROUPS

CU-REF	CU-DESCRIPTION	QTY	MU-REF
4/0 N	1119-26-05 GRD STL POLE W/PARTIAL MASTIC 4/0N	1	ALL GROUPS

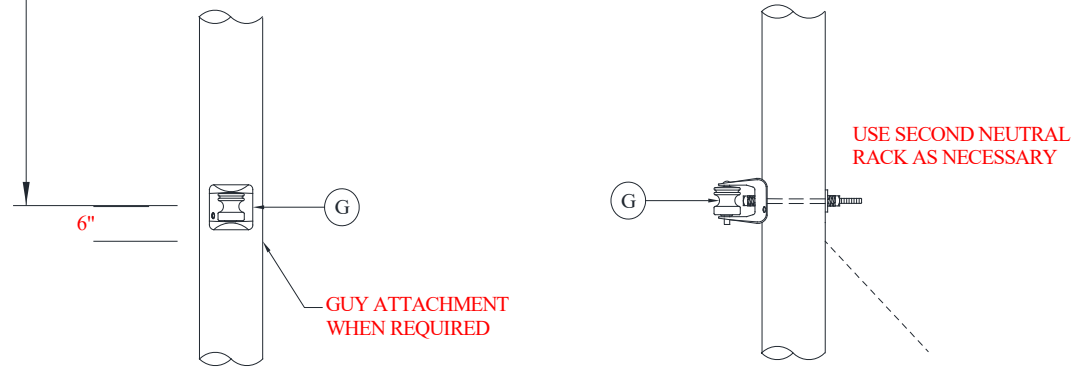
POLES, HARDWARE, AND FRAMING  
 3PH SELF-SUPPORTING FRAMING  
 3PH SELF SUPPORTING DBL DE FLAT




GUY ATTACHMENT  
 WHEN REQUIRED

8 FT. OR 10 FT.  
 CONSTRUCTION  
 REQUIRED ON  
 CONCRETE POLES  
 OR MODULAR POLES.

ANGLE		REDUCED TENSION
1124-30-01	5' ARM	1124-30-03
1124-30-06	8' ARM	1124-30-08
1124-30-11	10' ARM	1124-30-13





<b>1124-30</b>	<b>POLES, HARDWARE, AND FRAMING 3PH SELF-SUPPORTING FRAMING 3PH SELF SUPPORTING DBL DE FLAT</b>	
Sheet 2 of 4		
Rev: 08/01/20		

**MU**

**REFERENCE FOR SPAN LENGTH/ANGLE PARAMETERS**

MU-REF	WIRE	PARAMETERS
*1124-30-01	1/0	Angle pole > 30 degrees and < 60 degrees
1124-30-06	4/0	Angle pole > 18 degrees and < 30 degrees
1124-30-11	795	Angle pole > 18 degrees and < 30 degrees
1124-30-03	1/0	Full Tension Deadend w/Reduced Tension Span
1124-30-08	4/0	Full Tension Deadend w/Reduced Tension Span
1124-30-13	795	Full Tension Deadend w/Reduced Tension Span

**MU- ID**

**MU- REF**

**MU- DESCRIPTION**

3PHSSDDEFLT5FTARM

11243001

3PH SS DBL DE FLAT- ANGLE 5 FT ARM

ID	CU- REF	CU- DESC	QTY	MU- REF
A	11200701	INSULATOR W/ FIBERGLASS POLE TOP PIN- SGL	1	11243001
B	11201804	INSULATOR DE DBL W/3/4" EYENUT	1	11243001
C	11201807	INSULATOR DE DBL W/3/4" EYEBOLT	1	11243001
D	11201610	ARM FIBERGLASS DE HD 5 FT	1	11243001
E	11201701	INSULATOR DE SGL	4	11243001
F	11200901	INSULATOR W/ADAPTOR PIN	2	11243001
G	11201009	BRKT RACK 1 POINT 14 IN- DBL	1	11243001

3PHSSDDERTN5FTARM

11243003

3PH SS DBL DE FLAT REDUCED TEN 5FT ARM

ID	CU- REF	CU- DESC	QTY	MU- REF
A	11200701	INSULATOR W/ FIBERGLASS POLE TOP PIN- SGL	1	11243003
B	11201807	INSULATOR DE DBL W/3/4" EYEBOLT	1	11243003
C	11201804	INSULATOR DE DBL W/3/4" EYENUT	1	11243003
D	11201610	ARM FIBERGLASS DE HD 5 FT	1	11243003
E	11201701	INSULATOR DE SGL	4	11243003
F	11200901	INSULATOR W/ADAPTOR PIN	2	11243003
G	11201003	BRKT RACK 1 POINT 14 IN- SGL	2	11243003

3PHSSDDEFLT8FTARM

11243006

3PH SS DBL DE FLAT- ANGLE 8 FT ARM


ID	CU- REF	CU- DESC	QTY	MU- REF
A	11200701	INSULATOR W/ FIBERGLASS POLE TOP PIN- SGL	1	11243006
B	11201807	INSULATOR DE DBL W/3/4" EYEBOLT	1	11243006
C	11201804	INSULATOR DE DBL W/3/4" EYENUT	1	11243006
D	11201611	ARM FIBERGLASS DE HD 8 FT	1	11243006
E	11201701	INSULATOR DE SGL	4	11243006
F	11200901	INSULATOR W/ADAPTOR PIN	2	11243006
G	11201009	BRKT RACK 1 POINT 14 IN- DBL	1	11243006

3PHSSDDERTN8FTARM

11243008

3PH SS DBL DE FLAT REDUCED TEN 8FT ARM



<b>1124-30</b>	<b>POLES, HARDWARE, AND FRAMING 3PH SELF-SUPPORTING FRAMING 3PH SELF SUPPORTING DBL DE FLAT</b>	
Sheet 4 of 4		
Rev: 08/01/20		

	CU-REF	CU-DESCRIPTION	QTY	MU-REF
4/0-4/0	1240-01-01	DEAD END CLAMP 1/0-4/0	6	ALL GROUPS
	1240-04-06	TIES PREFM SGL 4/0	3	ALL GROUPS
	1240-03-40	DEAD END PREFM 4/0 AAC/ACSR	2	ALL GROUPS
	1245-02-07	H-TAP CU/AL 4/0-4/0	8	ALL GROUPS

	CU-REF	CU-DESCRIPTION	QTY	MU-REF
795-4/0	1240-01-07	DEAD END CLAMP 795	6	ALL GROUPS
	1240-04-10	TIES PREFM SGL 795	3	ALL GROUPS
	1240-03-40	DEAD END PREFM 4/0 AAC/ACSR	2	ALL GROUPS
	1245-07-77	CLAMP 2-BOLT 795-795	6	ALL GROUPS
	1245-02-07	H-TAP CU/AL 4/0-4/0	2	ALL GROUPS

**ASSOCIATED MODULES-GROUNDING- FULL MASTIC-ROCKY SOIL**

	CU-REF	CU-DESCRIPTION	QTY	MU-REF
1/0 N	1119-25-02	GRD STL POLE RS FULL MASTIC 1/0N	1	ALL GROUPS

	CU-REF	CU-DESCRIPTION	QTY	MU-REF
4/0 N	1119-25-07	GRD STL POLE RS FULL MASTIC 4/0N	1	ALL GROUPS

**ASSOCIATED MODULES-GROUNDING- FULL MASTIC-SOFT SOIL**

	CU-REF	CU-DESCRIPTION	QTY	MU-REF
1/0 N	1119-25-01	GRD STL POLE SS FULL MASTIC 1/0N	1	ALL GROUPS

	CU-REF	CU-DESCRIPTION	QTY	MU-REF
4/0 N	1119-25-06	GRD STL POLE SS FULL MASTIC 4/0N	1	ALL GROUPS

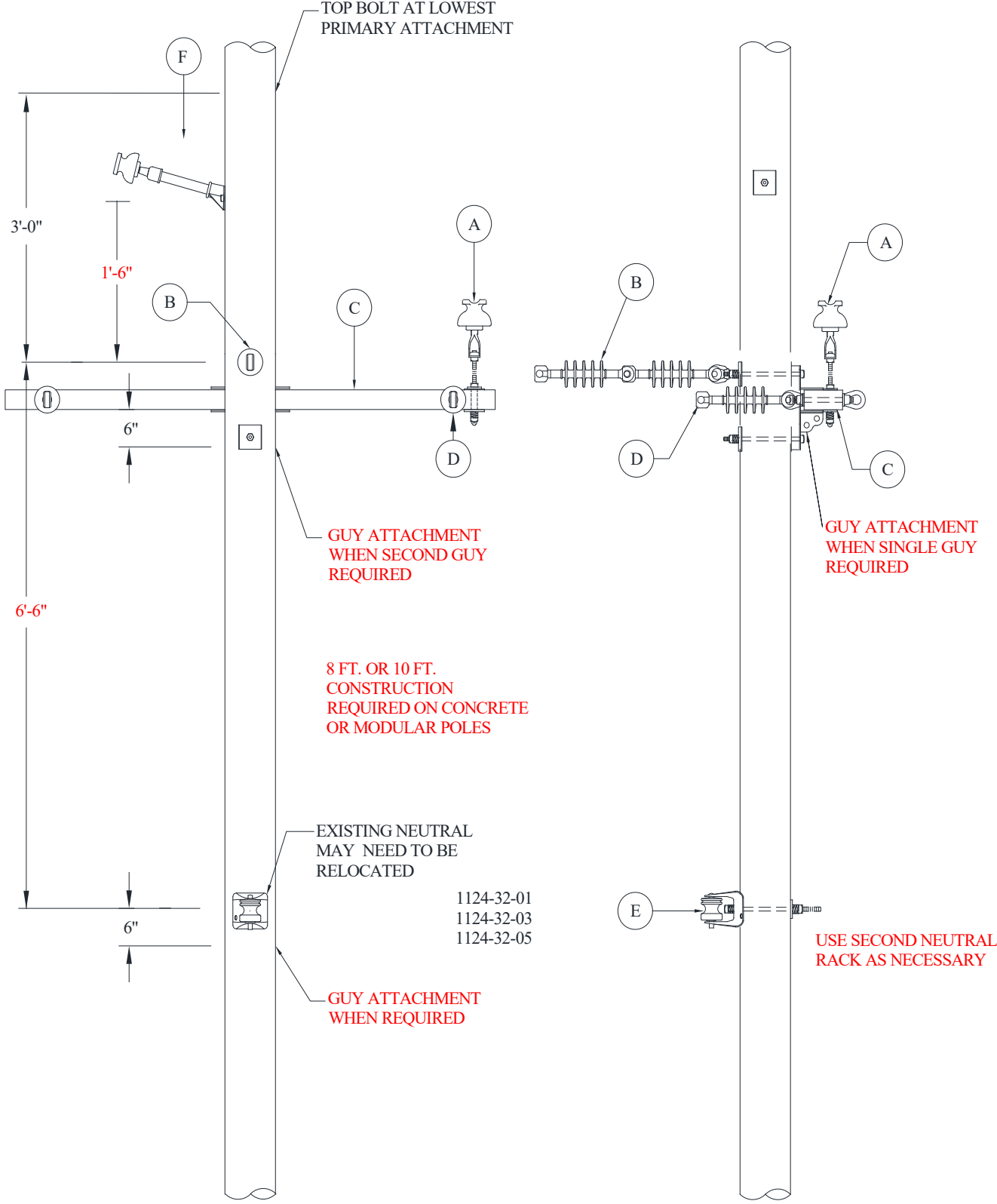
**ASSOCIATED MODULES-GROUNDING- PARTIAL MASTIC**

	CU-REF	CU-DESCRIPTION	QTY	MU-REF
1/0 N	1119-26-02	GRD STL POLE W/PARTIAL MASTIC 1/0N	1	ALL GROUPS


	CU-REF	CU-DESCRIPTION	QTY	MU-REF
4/0 N	1119-26-05	GRD STL POLE W/PARTIAL MASTIC 4/0N	1	ALL GROUPS

<b>1124-32</b>
Sheet 1 of 4
Rev: 08/01/20

**POLES, HARDWARE, AND FRAMING**  
**3PH SELF-SUPPORTING FRAMING**  
**3PH SELF SUPPORTING SGL DE JUNCTION FLAT**





<b>1124-32</b>	<b>POLES, HARDWARE, AND FRAMING 3PH SELF-SUPPORTING FRAMING 3PH SELF SUPPORTING SGL DE JUNCTION FLAT</b>	
Sheet 3 of 4		
Rev: 08/01/20		

**ASSOCIATED MODULES- JUMPERS**

	CU-REF	CU-DESCRIPTION	QTY	MU-REF
1/0-1/0	1245-02-04	H-TAP CU/AL 1/0-1/0	7	ALL GROUPS
	1240-04-03	TIES PREFM SGL 1/0	2	ALL GROUPS

4/0-4/0	1245-02-07	H-TAP CU/AL 4/0-4/0	7	ALL GROUPS
	1240-04-06	TIES PREFM SGL 4/0	2	ALL GROUPS

	CU-REF	CU-DESCRIPTION	QTY	MU-REF
4/0-795	1245-07-85	CLAMP 1-BOLT CU/AL 795-336	6	ALL GROUPS
	1240-04-06	TIES PREFM SGL 4/0	2	ALL GROUPS
	1245-02-07	H-TAP CU/AL 4/0-4/0	1	ALL GROUPS

	CU-REF	CU-DESCRIPTION	QTY	MU-REF
795-795	1245-07-77	CLAMP 2-BOLT 795-795	6	ALL GROUPS
	1240-04-10	TIES PREFM SGL 795	2	ALL GROUPS
	1245-02-07	H-TAP CU/AL 4/0-4/0	1	ALL GROUPS

**ASSOCIATED MODULES-FUSED-5 FT ARM**


	CU-REF	CU-DESCRIPTION	QTY	MU-REF
1/0-1/0	1245-02-04	H-TAP CU/AL 1/0-1/0	1	ALL GROUPS
	1368-12-10	LINE FUSE ASSY 5' DE ARM 1/0 PRI	1	ALL GROUPS

	CU-REF	CU-DESCRIPTION	QTY	MU-REF
1/0-4/0	1245-02-06	H-TAP CU/AL 4/0-1/0	1	ALL GROUPS
	1368-12-11	LINE FUSE ASSY 5' DE ARM 4/0 PRI	1	ALL GROUPS

	CU-REF	CU-DESCRIPTION	QTY	MU-REF
1/0-795	1245-02-06	H-TAP CU/AL 4/0-1/0	1	ALL GROUPS
	1368-12-14	LINE FUSE ASSY 5' DE ARM 795 PRI	1	ALL GROUPS

**ASSOCIATED MODULES-FUSED-8/10 FT ARM**

	CU-REF	CU-DESCRIPTION	QTY	MU-REF
1/0-1/0	1245-02-04	H-TAP CU/AL 1/0-1/0	1	ALL GROUPS
	1368-12-20	LINE FUSE ASSY 8/10' DE ARM 1/0 PRI	1	ALL GROUPS

<b>1124-32</b>	<b>POLES, HARDWARE, AND FRAMING 3PH SELF-SUPPORTING FRAMING 3PH SELF SUPPORTING SGL DE JUNCTION FLAT</b>	
Sheet 4 of 4		
Rev: 08/01/20		

	CU-REF	CU-DESCRIPTION	QTY	MU-REF
1/0-4/0	1245-02-06	H-TAP CU/AL 4/0-1/0	1	ALL GROUPS
	1368-12-21	LINE FUSE ASSY 8/10' DE ARM 4/0 PRI	1	ALL GROUPS

	CU-REF	CU-DESCRIPTION	QTY	MU-REF
1/0-795	1245-02-06	H-TAP CU/AL 4/0-1/0	1	ALL GROUPS
	1368-12-24	LINE FUSE ASSY 8/10' DE ARM 795 PRI	1	ALL GROUPS

**ASSOCIATED MODULES-HOT TAP JUMPERS**

	CU-REF	CU-DESCRIPTION	QTY	MU-REF
1/0-1/0	1245-02-04	H-TAP CU/AL 1/0-1/0	1	ALL GROUPS
	1368-05-40	JUMPER ASSY - HOT TAP 1/0 AL PRI	3	ALL GROUPS

**ASSOCIATED MODULES-GROUNDING- FULL MASTIC-ROCKY SOIL**

	CU-REF	CU-DESCRIPTION	QTY	MU-REF
1/0 N	1119-25-02	GRD STL POLE RS FULL MASTIC 1/0N	1	ALL GROUPS

	CU-REF	CU-DESCRIPTION	QTY	MU-REF
4/0 N	1119-25-07	GRD STL POLE RS FULL MASTIC 4/0N	1	ALL GROUPS

**ASSOCIATED MODULES-GROUNDING- FULL MASTIC-SOFT SOIL**

	CU-REF	CU-DESCRIPTION	QTY	MU-REF
1/0 N	1119-25-01	GRD STL POLE SS FULL MASTIC 1/0N	1	ALL GROUPS

	CU-REF	CU-DESCRIPTION	QTY	MU-REF
4/0 N	1119-25-06	GRD STL POLE SS FULL MASTIC 4/0N	1	ALL GROUPS

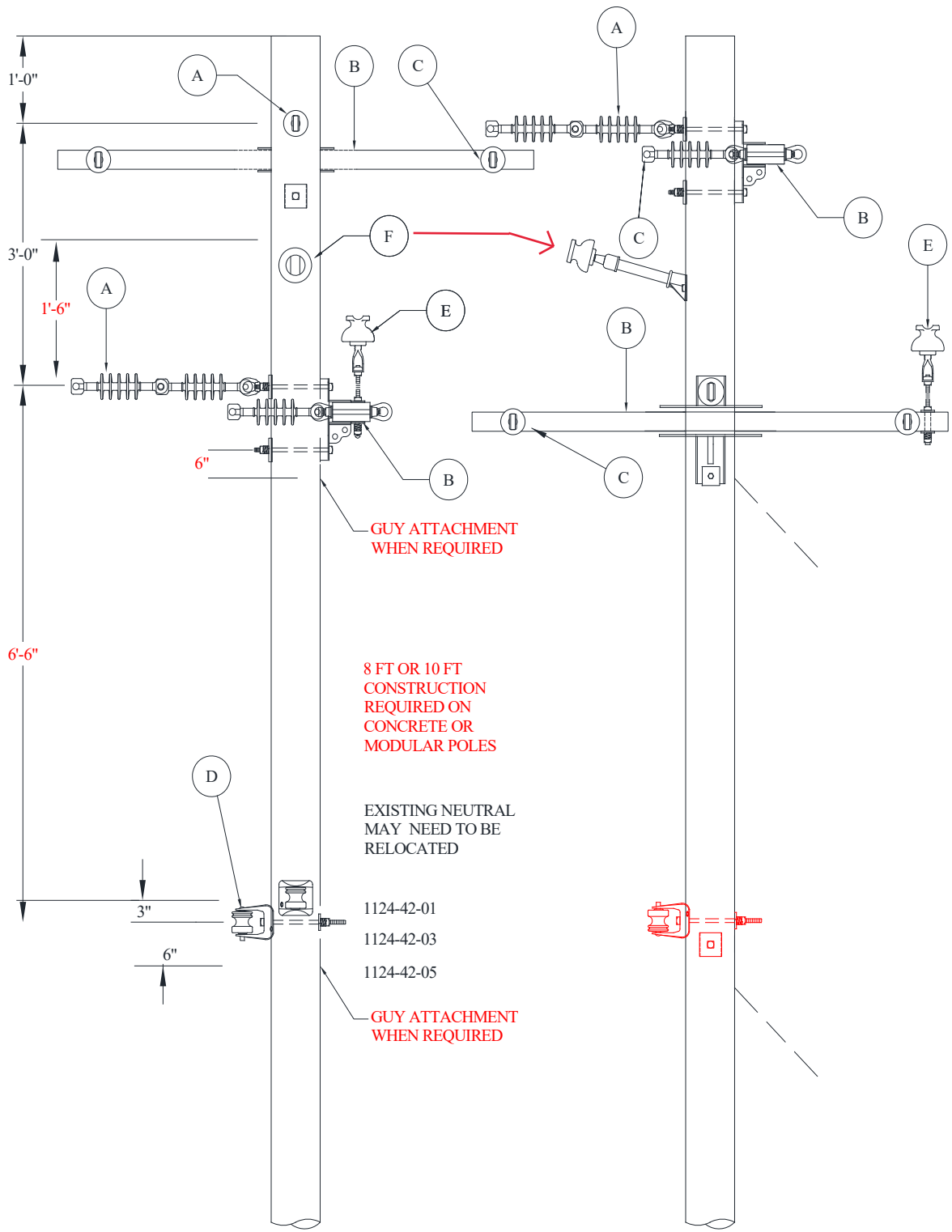
**ASSOCIATED MODULES-GROUNDING- PARTIAL MASTIC**

	CU-REF	CU-DESCRIPTION	QTY	MU-REF
1/0 N	1119-26-02	GRD STL POLE W/PARTIAL MASTIC 1/0N	1	ALL GROUPS

	CU-REF	CU-DESCRIPTION	QTY	MU-REF
4/0 N	1119-26-05	GRD STL POLE W/PARTIAL MASTIC 4/0N	1	ALL GROUPS

<b>1124-42</b>
Sheet 1 of 3
Rev: 08/01/20

**POLES, HARDWARE, AND FRAMING**  
**3PH SELF-SUPPORTING FRAMING**  
**3PH SELF SUPPORTING SGL DE FLAT CORNER POLE**







<b>1124-42</b>
Sheet 3 of 3
Rev: 08/01/20

**POLES, HARDWARE, AND FRAMING  
3PH SELF-SUPPORTING FRAMING  
3PH SELF SUPPORTING SGL DE FLAT CORNER POLE**



	<b>CU-REF</b>	<b>CU-DESCRIPTION</b>	<b>QTY</b>	<b>MU-REF</b>
795-4/0	1240-01-07	DEAD END CLAMP 795	6	ALL GROUPS
	1240-03-40	DEAD END PREFM 4/0 AAC/ACSR	2	ALL GROUPS
	1240-04-10	TIES PREFM SGL 795	1	ALL GROUPS
	1245-07-77	CLAMP 2 BOLT 795-795	6	ALL GROUPS
	1245-02-07	H-TAP CU/AL 4/0-4/0	1	ALL GROUPS

**ASSOCIATED MODULES-GROUNDING- FULL MASTIC-ROCKY SOIL**

	<b>CU-REF</b>	<b>CU-DESCRIPTION</b>	<b>QTY</b>	<b>MU-REF</b>
1/0 N	1119-25-02	GRD STL POLE RS FULL MASTIC 1/0N	1	ALL GROUPS

	<b>CU-REF</b>	<b>CU-DESCRIPTION</b>	<b>QTY</b>	<b>MU-REF</b>
4/0 N	1119-25-07	GRD STL POLE RS FULL MASTIC 4/0N	1	ALL GROUPS

**ASSOCIATED MODULES-GROUNDING- FULL MASTIC-SOFT SOIL**

	<b>CU-REF</b>	<b>CU-DESCRIPTION</b>	<b>QTY</b>	<b>MU-REF</b>
1/0 N	1119-25-01	GRD STL POLE SS FULL MASTIC 1/0N	1	ALL GROUPS

	<b>CU-REF</b>	<b>CU-DESCRIPTION</b>	<b>QTY</b>	<b>MU-REF</b>
4/0 N	1119-25-06	GRD STL POLE SS FULL MASTIC 4/0N	1	ALL GROUPS

**ASSOCIATED MODULES-GROUNDING- PARTIAL MASTIC**

	<b>CU-REF</b>	<b>CU-DESCRIPTION</b>	<b>QTY</b>	<b>MU-REF</b>
1/0 N	1119-26-02	GRD STL POLE W/PARTIAL MASTIC 1/0N	1	ALL GROUPS

	<b>CU-REF</b>	<b>CU-DESCRIPTION</b>	<b>QTY</b>	<b>MU-REF</b>
4/0 N	1119-26-05	GRD STL POLE W/PARTIAL MASTIC 4/0N	1	ALL GROUPS